



ONSITE PROGRAM
ISHA 87th Convention
April 11-13, 2024

**Sheraton Indianapolis Hotel at
Keystone Crossing**

Handouts Available

Use your phone to scan this
QR Code to access the
Session Handouts.



**Handouts, session
abstracts and presenter
information all available
on the *Pathfinder*.**

Visit www.islha.org

Welcome!

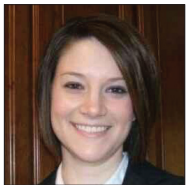
Welcome to the 87th Annual ISHA Convention! The entire ISHA Executive Council is excited to welcome you back to Keystone at the Crossing.

Our Vice Presidents of Professional Development, Laura Bobinsky, Whitney Beltré and Becca Simoneaux, along with our management team, Craven Management Associates, have worked tirelessly this past year to provide you with yet another outstanding year of sessions and topics to ensure that ISHA equips you with the tools and knowledge needed to further the professions of speech-language pathology and audiology in Indiana!

I urge you to attend a full day's worth of sessions and explore our Exhibit Hall. Don't forget to visit our Silent Auction to raise money for our scholarships, along with our Wine Pull, to raise funds for ISHA's PAC. Reconnect with former classmates. Form new professional networks. Discover a new practice area or further refine an existing one.

Plan to attend our Saturday Breakfast Business Meeting to learn more about how the association has been working diligently for you this past year, with advocacy efforts focused on both school-based issues and medical speech-language pathology. Immediately following the Business Meeting will be the annual awards ceremony. Help us celebrate professional accomplishments within our state. We hope you leave the Convention feeling refreshed and reenergized for our field.

As my role as ISHA President is coming to an end, I thank you all for your continued support of our wonderful organization. The tireless advocacy and support that ISHA's Executive Council and supporters provide never ceases to amaze me. I remain in awe of the wonderful work we do as a profession; of the lives we directly impact on a daily basis and of the resilience we exhibit as a profession. Join me in celebrating our profession at yet another wonderful Convention.



Warm wishes,
Carolyn "Carrie" Wade, MS, CCC-SLP
ISHA President

ISHA At-a-Glance

THURSDAY

7:00 am–4:30 pm..... Registration
7:00 am–8:00 am..... Breakfast
8:00 am–4:30 pm..... Sessions
10:00 am–4:30 pm..... Exhibits Open

FRIDAY

7:00 am–4:30 pm..... Registration
7:00 am–8:00 am..... Breakfast
7:00 am–3:00 pm..... Exhibits Open
8:00 am–4:30 pm..... Sessions
10:00 am–11:30 am..... Demonstrations

SATURDAY

7:00 am–2:00 pm..... Registration
9:45 am–2:00 pm..... Sessions
8:00 am–9:30 am..... Annual Business Meeting
Breakfast and Awards Ceremony
(Ticket Required)



Silent Auction

Benefits Scholarships

Bidding Times:
Starts: 10:00 am Thursday
Ends: 1:00 pm Friday
Pick-up: Until 3:00 pm

Wine Pull

Benefits ISHA PAC

Buy a numbered cork to see which one you get to take home.

<p>Sponsors & Exhibitors</p>		 <p>Associates in Pediatric Therapy™ Advancing Patients to Their Next Therapeutic Level</p>
	<p>· P A U L · H · BROOKES PUBLISHING CO®</p>	<p>ClaimAid</p>
 <p>DELPHI COMMUNITY SCHOOL CORPORATION</p>	 <p>Evansville Vanderburgh School Corporation Bringing Learning to Life</p>	 <p>Indiana University Health</p>
<p>Kids COUNT THERAPY SERVE TOGETHER</p>	<p><i>Badge Sponsor</i></p>  <p>MOUNT ST. JOSEPH UNIVERSITY® Speech-Language Pathology Program</p>	<p>myIPS</p>
 <p>paperpie brand partner</p>	 <p><i>Lanyard Sponsor</i></p> <p>prc-salttillo</p>	 <p>Perry Township Schools</p>
	<p>sonova Audiological Care U.S. HEAR THE WORLD</p>	
 <p>Smartbox family</p>	<p>tobii dynavox</p>	 <p>WARREN TOWNSHIP</p>

Session Tracker

Keep track of your session attendance here, then use the Online CE Reporting System to report your hours.

Deadline to enter your information is April 30, 2024.

Visit www.islha.org to access the Online CE Reporting System.

Time	Session		Track	Room	Attendance	
Thursday, April 11					✓	ASHA
Registration 7:00 am - 4:30 pm Exhibits 10:00 am - 4:30 pm						
8:00 am - 9:30 am	1.1	Communication Strategies for Infants and Toddlers With Hearing Loss	EI	Plaza B	1.5	
	1.2	Intro to Trauma-Informed Care for SLPs	Multi-Interest	Plaza A		
	1.3	The C-PICS: A Tool for Your AT Coaching Playbook	School Age	Suite 10		
	1.4	Using Technology to Support Reading Comprehension for People With Aphasia, Part 1	Adult	Suite 16		
8:30 am - 9:30 am	1.5	How do Babies and Children Learn New Skills? Examining Feeding With Skills-Based Assessment	Peds Medical	Plaza E	1.0	
10:00 am - 11:00 am	2.1	Breastfeeding Skills for the SLP: In the NICU and Beyond	Peds Medical (*)	Suite 10	1.0	
10:00 am - 11:30 am	2.2	AAC in the Classroom: Strategies for Becoming Strong Communication Partners	School Age	Plaza B	1.5	
	2.3	Helping Parents With Transition From Part C to Part B Services	EI	Plaza E		
	2.4	Trauma-Informed Care Across SLP Settings	Multi-Interest	Plaza A		
	2.5	Using Technology to Support Reading Comprehension for People With Aphasia, Part 2	Adult	Suite 16		
1:00 pm - 2:30 pm	3.1	AAC Users Can Have Vocal Attitudes, Really!	Multi-Interest	Suite 10	1.5	
	3.2	Acute and Chronic mTBI Management: Evidence Based Approaches for Treatment	Adult	Suite 16		
	3.3	Ensuring Equitable Educational Access for d/Deaf or Hard of Hearing Students	School Age (*)	Plaza E		
	3.4	Self-Care for Providers and Educators	Multi-Interest	Plaza A		
	3.5	Supporting Families With Behavior Management Strategies in Early Intervention	EI	Plaza B		
3:00 pm - 4:00 pm	4.1	Entry-Level Leadership: Identifying Duality in Practice and Facilitating Professional Development	Multi-Interest (*)	Plaza E	1.0	
	4.2	Increasing our Understanding of Neuromuscular Contributions in Swallowing Rehabilitation: Validation and First Data From a New Wearable sEMG Biofeedback System	Adult	Suite 16		
3:00 pm - 4:30 pm	4.3	Supervision and Collaboration as a Trauma-Informed SLP	Multi-Interest	Plaza A	1.5	
	4.4	The SLP's and Family's Perspective on Obtaining a Speech-Generating Device for Pediatric Patients	School Age	Suite 10		
	4.5	Having Difficult Conversations With Families and Colleagues in Early Intervention	EI	Plaza B		
Friday, April 12					✓	ASHA
Registration 7:00 am - 4:30 pm Exhibits 7:00 am - 3:00 pm						
8:00 am - 9:30 am	5.1	Factors That may Influence the Quality of Music Recorded From Hearing Aids	Audiology	Suite 16	1.5	
	5.3	Savvy Selection of Assessments for Language and Literacy Including Dyslexia	School Age (*)	Plaza A		
	5.4	Dysphagia in Individuals With Amyotrophic Lateral Sclerosis	Adult	Suite 10		
	7.4	Responsive Feeding Fundamentals for Every Feeding Therapist NEW TIME	Peds Medical	Plaza B		
8:30 am - 9:30 am	5.5	Elevating Impact Through Strategic Investment in our State and National Professional Organizations	Multi-Interest (*)	Plaza E	1.0	
10:00 am - 11:30 am	DM	Demonstrations (Posters) Viewing Earn up to a maximum 1.5 hours. Enter Qty of Posters viewed CE credit awarded in half hour increments. 2 poster = .5 hours	Demonstrations	Suite 5 and Suite 7	Up to 1.5	
10:30 am - 11:30 am	6.1	Growing a Vestibular Practice Through Dizziness and Balance Screenings	Audiology (*)	Suite 16	1.0	

(*) Denotes call for paper submission.

Session Tracker *(continued)*

Friday, April 12 (Continued)					✓	ASHA
Registration 7:00 am - 4:30 pm Exhibits 7:00 am - 3:00 pm						
1:00 pm - 2:30 pm	5.2	Motor Learning and Skill Development With Responsive Feeding Therapy NEW TIME	Peds Medical	Plaza B		1.5
	7.1	Assessing Attention Through the Lens of Distraction	Audiology	Plaza E		
	7.2	Best Practices in Providing Dysphagia Services: Inclusion Body Myositis	Adult	Suite 10		
	7.3	Creating a Communication Ecosystem in Schools	School Age (*)	Suite 16		
	7.5	Teaching Grammar Targets Through Thematic Units	School Age	Plaza A		
3:00 pm - 4:00 pm	8.1	The InVISTA Program: AAC and Smart Home Technology	Multi-Interest (*)	Suite 16		1.0
3:00 pm - 4:30 pm	8.2	A Review of Pediatric Tracheostomy Anatomy, Physiology and Therapy Strategies for the Community Setting	Peds Medical	Plaza B		1.5
	8.3	Best Practices in Providing Dysphagia Services: Obstructive Sleep Apnea	Adult	Suite 10		
	8.4	Case Studies in Expanded Cochlear Implant Indications for Adult and Pediatric Patients	Audiology	Plaza E		
	8.5	Telepractice Assessment: Practical Strategies for School-Age Clients	School Age	Plaza A		
Saturday, April 13					✓	ASHA
Registration 7:00 am - 2:00 pm						
8:00 am - 9:30 am	SE	Annual Business Meeting and Awards Ceremony - Breakfast Served NEW Day/Time Pre-registration required	Special Event	Clearwater (Level One)		
9:45 am - 10:45 am	9.1	Common Ethical Issues and How to Avoid Them	Ethics	Plaza A		1.0
	9.2	Making the Most of Therapy Minutes in School Settings, Part 1	School Age	Plaza B		
	9.3	Practical Evaluation and Therapy Strategies for Pediatric Voice Disorders	Peds Medical	Plaza D		
	9.4	SLPs in the Bathroom, Part 1	Adult	Suite 10		
11:00 am - 12:00 pm	10.1	How Does the Revised ASHA Code of Ethics Affect Your Practice?	Ethics	Plaza A		1.0
	10.2	Making the Most of Therapy Minutes in School Settings, Part 2	School Age	Plaza B		
	10.3	SLPs in the Bathroom, Part 2	Adult	Suite 10		
11:00 am - 12:30 pm	10.4	Sensory Processing, Food and Fun!	Peds Medical	Plaza D		1.5
1:00 pm - 2:00 pm	11.1	Great Expectations: Understanding Dementia	Adult	Suite 10		1.0
	11.2	Pediatric Cognitive Evaluation and Treatment Strategies Post Hospitalization for Acquired Brain Injuries	Peds Medical	Plaza B		
	11.3	Practical Prompting: AI Solutions for Evidence-Based Phonological Intervention	School Age (*)	Plaza A		
	11.4	Verification 201: Verification Review and Hearing Aid Case Studies	Audiology (*)	Plaza D		
Enter Total						

(*) Denotes call for paper submission.

Continuing Education



ASHA CE
APPROVED PROVIDER

Indiana
Speech-Language-Hearing
Association

This course is offered for up to 1.55 ASHA CEUs (various levels)

The ethics sessions (Sessions 9.1 and 10.1) are offered separately for up to 0.2 ASHA CEUs. (various levels)

Presenter Disclosure Statements

Presenters of the Indiana Speech-Language-Hearing Association may have relevant financial and non-financial relationships to disclose. Full disclosure for the presenters is provided on the ISHA website. Please visit the website, www.islha.org to view all presenter disclosures.

ISHA Demonstrations (Posters)

Friday, April 12 10:00 am- 11:30 am

P01 *Impact of Smart Frames as Assistive Technology: A Case Study*

Katya Babe, Saint Mary's College; Syd Brooks, DePaul University; Tsuki Larkins, Saint Mary's College; Olivia Rice, Saint Mary's College; Christina Corso, PhD, CCC-SLP, Saint Mary's College

P02 *Sepsis-Associated Encephalopathy and the Role of the Speech-Language Pathologists*

Jennifer Vascil, BS, Indiana University of South Bend

P03 *Vision Specialists' Perspectives on Smart-Frames: The Benefits/Challenges of Wearables*

Grace Layman; Ruby Meza; Christina Corso, PhD, CCC-SLP, from Saint Mary's College

P04 *Efficacy of Accent Modification*

Emma Hake, Purdue University

P05 *Electronic Media, Hearing Loss and Language Development: A Pilot Study*

Sarah Mahnesmith, Butler University

P06 *Effects of Music on Executive Functioning in Children*

Abigail Dame; Tonya Bergeson, PhD, from Butler University

P07 *The Importance of Hearing Conservation Education in College Orientation*

Madison McNeill, BS; Anne Sommer, AuD, CCC-A, from Purdue University

P08 *Code-Switching and Code-Mixing in Bilingual AAC*

Kaitlyn Lange, BA, Indiana University

P09 *An AuD Collaboration: How Early Interventionists Can Collaborate With Audiologists*

Anna Toovey, CCC-SLP, St. Joseph Institute for Deaf; Shannon Van Hyfte, AuD, Purdue University

P10 *#InstagramMoms: How Does Mothers' Instagram use Influence Child Language Development?*

Tierney Maurer; Grace Harahan; Maura Todd; Elaine Stribley; Emily Ziccardi; Jamie Gindorf; Sophie Waldvogel, from Butler University

P11 *Beyond Babbling: Language and Music in the Homes of Children With Cochlear Implants*

Tonya Bergeson, PhD; Brianna Karras, from Butler University

P12 *Interprofessional Dysphagia Care: Safety and Need for Guidelines*

Marissa Van De Weg, Purdue University Fort Wayne; Naomi Gurevich, PhD, Purdue University Fort Wayne; Danielle Osmelak, EdD, Governors State University

P13 *Inner Speech in the Daily Lives of People With Post-Stroke Aphasia*

Allison Harris; Bethany Yagoda, from Indiana University Bloomington

P14 *STAR- Sentence Treatment for Aphasia Recovery: Implicit Learning Through Structural Priming*

Katelin Rainey, BS; Hannah Brownd, BA; Jiyeon Lee, PhD, from Purdue University

P15 *The Diverse Nature of Preschool Peers and Language Outcome Effects*

Brooklynn Ledger, BA, Purdue University

P16 *Effects of SFA and PCA Treatments in Mandarin-Speaking Adults With Aphasia*

Peng Zhang, MA, Purdue University

P17 *Addressing Hearing Health Equity in Indiana Using Precision Audiology*

Joshua Alexander, PhD; Michael Heinz, PhD; Maureen Shader, PhD; Ananth Grama, PhD; Edward Bartlett, PhD; Jennifer Simpson, AuD, from Purdue University

P18 *Does Sentence Type Affect the Perception of Accent Distance?*

Malachi Henry, MA, CCC-SLP; Sami Branson; Gabrielle Kilaras; Tessa Bent, PhD, from Indiana University - Bloomington



Super Duper® Digital Library

Cards ★ Workbooks ★ Games

Over 57,000 Online Resources!

- Basic Concepts
- Critical Thinking
- Early Skills
- Grammar
- Listening
- Literacy
- Memory
- Sequencing
- Social Skills
- ...and more!




FREE TRIAL!

Available in MONTHLY or ANNUAL subscriptions.
www.SuperDuperLibrary.com



Stop by our table in the Exhibit Hall.

Pathfinder




Handouts, session abstracts and presenter information all available on the *Pathfinder*.

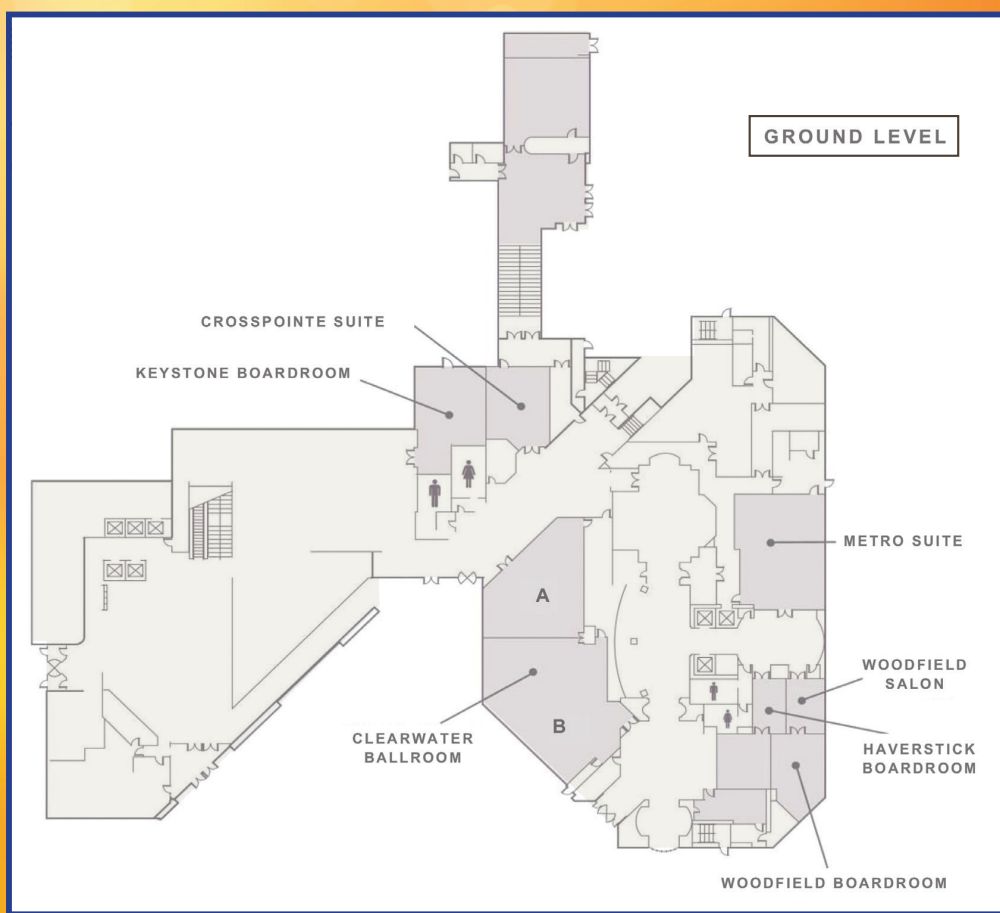
Visit www.islha.org



Handouts Available

Use your phone to scan this QR Code to access the Session Handouts.





Pathfinder

Handouts, session abstracts and presenter information all available on the *Pathfinder*.

isla.org