

# Telepractice: 20 Questions

ISHA 2018

## Alicia Dillingham, M.A., CCC-SLP

Clinical service delivery in schools, outpatient, and private practice settings for 10+ years

2+ years experience with PresenceLearning - providing skilled SLP services online

Licensed in IN, CA, MI, and MN

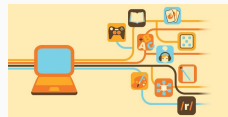


## Disclosures

Independent Contractor with PresenceLearning

No compensation received for presentation

Non-Financial Disclosure: Member of ISHA, ASHA and ASHA SIG 18



## What Will I Learn? *Learning Objectives*

Define telepractice as a service delivery modality to provide speech and language services

Identify potential benefits in using telepractice as a service delivery modality

Identify potential challenges in using telepractice as a service delivery modality

## Tele-what?

Telehealth  
Telemedicine  
Telepractice  
Teletherapy  
Connected health



## What Does ASHA Say?

### American Speech-Language-Hearing Association

The application of telecommunications technology at a distance

Telepractice is defined as “the application of telecommunications technology to the delivery of speech-language pathology and audiology professional services at a distance by linking clinician to client/patient or clinician to clinician for assessment, intervention, and/or consultation” (ASHA, n.d.)

## What is ASHA Special Interest Group 18?

### Mission Statement

It is the mission of SIG 18 to provide education, leadership, and advocacy for issues in telepractice, telespeech, and teleaudiology.

### Goals

1. To provide resources and education related to telespeech and teleaudiology.
2. To promote excellence in evidence-based clinical practice in telespeech and teleaudiology.
3. To promote the development and dissemination of research in telespeech and teleaudiology.

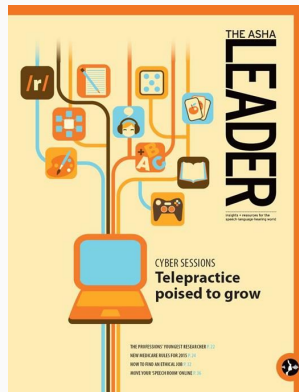
## Why the Demand for Service?

Increase in availability of internet services in schools and homes

Social networking has increased interaction with healthcare providers

Ease of video options

Increased efficiency



## Is There a Need?

SLP shortages

Rural areas are underserved

Travel time & cost

Supplement to school-based SLPs to assist with high caseloads

## What Are the Benefits of Telepractice?

Minimizes barriers to access therapy

Minimizes travel time for patient and/or clinician

Reduces costs

Reduces delay in service time

## Same and Different



## Same and Different



## You Do What?

How many of you have used FaceTime to call someone?

How many of you have used Google Hangout for a work meeting?

Has anyone used an online portal to access medical results?

Requested medication be faxed or sent electronically to a pharmacy?

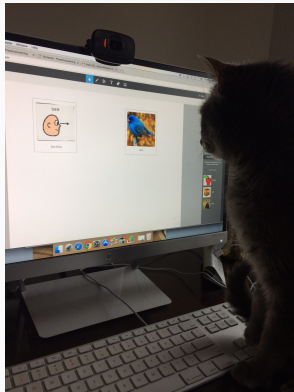
## What Equipment Do You Need As A Clinician?

Desktop or laptop computer	Printer
Direct line to Internet	Scanner
Webcam	Phone
Headset with microphone	E-mail

## What Equipment Does the Client Need?

Desktop or laptop computer	Printer
Direct line to Internet	Scanner (optional)
Webcam	Phone* (important for tech support)
Headset with microphone*	E-mail

## Home office



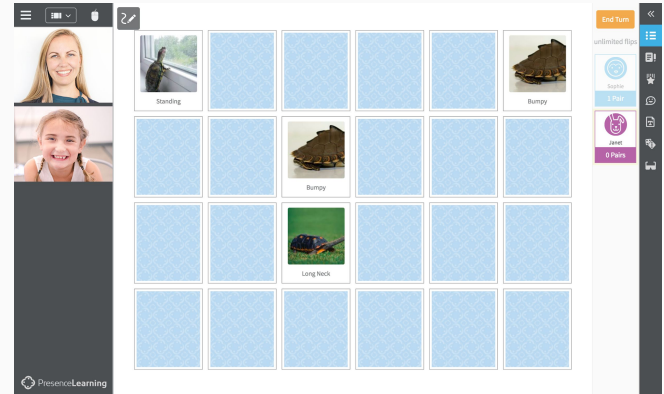
## What Skills Do You Need As A Clinician?

- Basic computer skills
- Troubleshooting skills
- Communication skills
- Patience
- Organization

## What Materials Do You Use?

- Cards
- Board games
- Memory
- Videos
- Curriculum-based activities

*PL has an extensive digital content library of activities or clinicians can upload their own materials*



Example of PL Memory

## What About Data?

Grogan-Johnson, S., Schmidt, A., et al. (2013). A Comparison of Speech Sound Intervention Delivered by Telepractice and Side-by-Side Service Delivery Models.

"This study investigated the progress made by school-age children with speech sound impairments in side-by-side intervention compared with telepractice intervention. Fourteen children aged 6 through 10 years with identified speech sound disorders were randomly assigned to intervention delivered in a side-by-side or telepractice service delivery model. Children in both service delivery models made improvement in their speech sound production during the program. There were no significant differences between the two groups. The results of this study support the use of telepractice in the intervention of children's speech sound disorders."

## What About Testing?

PresenceLearning clinicians have performed more than 6,000 online evaluations using commonly used assessments including:

GFTA-3, KLPA-3, Arizona-3, CELF-5, CELF-5 Screener, CELF-Metalinguistics, CASL2, CELF 4-Spanish, PPVT-4, EVT-2, SSI-4, EOWPVT, ROWPVT, TAPS-3

## Can You Show Us the Data?

Waite, M., Theodoros, D., Russell, T., and Cahill, L. (2010). Internet-Based Telehealth Assessment of Language using the CELF-4.

"No significant difference was found between the online and FTF total raw scores and scaled scores for each subtest. Weighted kappas revealed very good agreement on the individual items, total raw scores, scaled scores, core language score, and severity level. Intra- and interrater reliability were determined for a sample of online ratings, with intraclass correlation analysis revealing very good agreement on all measures."

<http://videos.presencelearning.com/watch/GYKMjS71oJNLToEtsQWXEw>

## Who Helps The Student Log Into Therapy?

1:1 or 1: group primary support person (PSP)

Students who are independent can utilize computer assistance, media room staff, or school volunteers

Virtual students- parents are present as learning coaches

## How Do You Participate In IEP Meetings?

Varies by school district

Team members may call into a conference line

Another option is for CCC members to attend in person and for SLP to attend virtually via online therapy room

## What About Licensure?

Each state has its own laws (or not) for telepractice

Anyone providing speech-language pathology or audiology services to a resident of Indiana should be licensed by our state and knowledgeable about state guidelines.

\*Point of origin and point of receipt of services

**Follow the rules of your professional organizations and licensing boards**

## Can You Tell Us More?

### ON-SITE SLP

ASHA Certificate of Clinical Competency

State License

Teaching License/Certificate

Other credentials as required by school

*\*stay on top of rules & regulations*

### VIRTUAL SLP

ASHA Certificate of Clinical Competency

State License

Teaching License/Certificate

Other credentials as required by school

*\*stay on top of rules & regulations*



A student playing a board game during a telepractice session. The clinician and spinner are on the left side of the screen.

## What Are The Challenges To Telepractice?

- Clients must have secure internet provider and equipment
- Quiet environment for provider and student
- Parent or support personnel are essential when working with young students
- Reluctance from school staff, administrators, parents
- Telepractice is not for every client

## Are There Challenges as an SLP?

- Communication - clear communication is key
- Can be isolating compared to working in clinic or school setting
- Working from home requires boundaries



## What Questions Should I Ask When Interviewing?

- What tech support is provided?
- What training is provided specific to telepractice? Continuing education opportunities?
- What opportunities are available in states where you are licensed?
- Will the company provide reimbursement or bonus for additional state licenses?
- Is there compensation for indirect therapy time?



## What Does the Future Hold for Telepractice?

Telepractice can meet various needs (individual clients, groups, schools, rehab)

Telepractice models will continue to be an option in educational and medical settings

As the shortage of SLPs continues in rural areas, telepractice should be considered as an option

## Questions?

## What About References?

ASHA Special Interest Group 18

American Speech-Language-Hearing Association. (n.d.). *Telepractice*. (Practice Portal). Retrieved from [www.asha.org/Practice-Portal/Professional-Issues/Telepractice](http://www.asha.org/Practice-Portal/Professional-Issues/Telepractice)

Grogan-Johnson, S., Schmidt, A., et al. (2013). A Comparison of Speech Sound Intervention Delivered by Telepractice and Side-by-Side Service Delivery Models.

Hill, A., & Theodoros, D. (2002). Research into telehealth applications in speech-language pathology. *Journal of Telemedicine and Telecare*, 8(4), 187–196. doi:10.1258/135763302320272158

## More References?

Mashima, P. A., & Doarn, C. R. (2008). Overview of telehealth activities in speech-language pathology. *Telemedicine and E-Health*, 14(10), 1101–1117. doi:10.1089/tmj.2008.0080

Taylor, O. D., Armfield, N. R., Dodrill, P., & Smith, A. C. (2014). A review of the efficacy and effectiveness of using telehealth for paediatric speech and language assessment. *Journal of Telemedicine and Telecare*, 20(7), 405–412. doi:10.1177/1357633X14552388

Theodoros, D. (2011). Telepractice in speech-language pathology: The evidence, the challenges, and the future. *Sig 18 Perspectives on Telepractice*, 1(1), 10–21. doi:10.1044/tele1.1.10

Waite, M., Theodoros, D., Russell, T., and Cahill, L. (2010). Internet-Based Telehealth Assessment of Language Using the CELF-4.