



Luis Riquelme, PhD, CCC-SLP, BCS-S

Affiliation: New York Medical College and the Center for Swallowing and Speech-Language Pathology, New York Presbyterian Brooklyn Methodist Hospital

Experience: Dr. Luis Riquelme is currently Associate Professor, Speech-Language Pathology, New York Medical College; and Director, Center for Swallowing & Speech-Language Pathology, New York-Presbyterian Brooklyn Methodist Hospital. He completed his Ph.D. at The Graduate Center, CUNY. Luis has authored articles on dysphagia, multiculturalism, cultural competence, leadership and quality improvement. He has presented

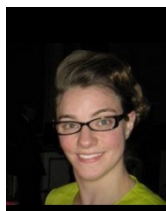
locally and internationally. He has served on local, national and international boards and committees. He currently sits on the BOD, International Dysphagia Diet Standardisation Initiative (IDDSI) and is immediate Past-Chair, American Board of Swallowing & Swallowing Disorders and Past Chair of the NYS Board for Speech-Language Pathology and Audiology. He is also Past Chair, ASHA Multicultural Issues Board; Past Chair, ASHA PAC Board and Past President, NYSSLHA. He co-founded the Hispanic Caucus for SLPs and Audiologists in 1992. Luis became an ASHA Fellow in 2009 and received ASHA's Certificate of Recognition for Special Contributions in Multicultural Affairs in 2006. From NYSSLHA he received Distinguished Service Award (2001) and Distinguished Achievement Award (2017). Dr. Riquelme's research has focused on changes in swallow physiology in the presence of swallowing pills, as well as pathophysiological changes of swallow in persons with dementia. He also writes and presents about the impact of culture on our work.

Title of Presentation: *Changing Clinical Paradigms: Moving towards better evidence in dysphagia practice: Part 1: Swallow physiology connections. Part 2: IDDSI framework in practice*

Learner Objectives: Part 1: Participants will: 1. Describe airway closure in physiological terms including the latest evidence; 2. Provide two differences in physiology of the swallow in persons with dementia; 3. State at least two changes in swallow behaviors in the presence of a pill. **Part 2:** Participants will: 1. Provide at least two rationales for the use of the IDDSI framework; 2. Demonstrate how to use the IDDSI Flow Test for thickened liquids; 3. Outline one approach to implementation at their facility.

Course Overview: Part 1: Swallow physiology connections - Understanding swallow physiology goes beyond just knowing nerves and muscles, it impacts how we see a person's swallow and the decisions that follow. Lingual movement, airway protection and bolus clearance are just a few physiologically-based behaviors we interpret and make clinical decisions with. This impacts our patients and their quality of life (QOL). The evidence available on these behaviors must guide our interpretation. This session will focus on such physiologically-based decision-making, as well as present data on changes in persons with dementia and changes when in the presence of a pill. The general aim of the presentation will be clinical. **Part 2: IDDSI framework in practice** - The International Dysphagia Diet Standardisation Initiative (IDDSI) framework was released in December 2015 to overwhelming international support, including a joint announcement in January 2017 from ASHA and the American Academy of Nutrition and Dietetics. Implementation is underway in many parts of the world. This practical session will provide an interactive opportunity to learn more about the development and evidence behind the framework and to use the IDDSI food and drink testing methods in practice. In addition, lessons learned on the implementation process will be shared by two speakers. The IDDSI Functional Diet Scale will also be presented.

Disclosure: *Luis Riquelme is employed by New York Medical College and the Center for Swallowing and Speech-Language Pathology, New York Presbyterian Brooklyn Methodist Hospital. He is receiving an honorarium from ISHA. He has no significant non-financial relationships to disclose.*



Lydia Hittle, MA, CCC-SLP

Affiliation: Hearburn and Swallowing Disorders Center at Hancock Regional Hospital

Experience: Lydia Hittle, MA CCC-SLP is the coordinator for the Heartburn and Swallowing Disorders Center at Hancock Regional Hospital. She is trained to administer and edit esophageal manometry and 24 hour reflux studies in addition to traditional dysphagia evaluations and treatment. Lydia also provides inpatient and outpatient speech-language, cognitive and voice therapy. Additionally, Lydia has served ISHA on the executive council for the last 6 years. She is the immediate past president of ISHA

Title of Presentation: Changing Clinical Paradigms: Moving Toward Better Evidence in Dysphagia Practice. Part 1: Swallow physiology connections. Part 2: IDDSI framework in practice

Learner Objectives: **Part 1:** Participants will: 1. Describe airway closure in physiological terms including the latest evidence; 2. Provide two differences in physiology of the swallow in persons with dementia; 3. State at least two changes in swallow behaviors in the presence of a pill. **Part 2:** Participants will: 1. Provide at least two rationales for the use of the IDDSI framework; 2. Demonstrate how to use the IDDSI Flow Test for thickened liquids; 3. Outline one approach to implementation at their facility.

Course Overview: Part 1: Swallow physiology connections - Understanding swallow physiology goes beyond just knowing nerves and muscles, it impacts how we see a person's swallow and the decisions that follow. Lingual movement, airway protection and bolus clearance are just a few phy our patients and their quality of life (QOL). The evidence available on these behaviors must guide our siologically-based behaviors we interpret and make clinical decisions with. This impacts interpretation. This session will focus on such physiologically-based decision-making, as well as present data on changes in persons with dementia and changes when in the presence of a pill. The general aim of the presentation will be clinical.

Part 2: IDDSI framework in practice - The International Dysphagia Diet Standardisation Initiative (IDDSI) framework was released in December 2015 to overwhelming international support, including a joint announcement in January 2017 from ASHA and the American Academy of Nutrition and Dietetics. Implementation is underway in many parts of the world. This practical session will provide an interactive opportunity to learn more about the development and evidence behind the framework and to use the IDDSI food and drink testing methods in practice. In addition, lessons learned on the implementation process will be shared by two speakers. The IDDSI Functional Diet Scale will also be presented.

Disclosure: *Lydia Hittle is employed by Hancock Regional Hospital. She has no significant non-financial relationships to disclose.*